

ANDROMAT TODAY

Volume 4, Issue 1

February 2016

CONNECTIVITY



"Are you connected?"

Scott Wilson

Henschel Andromat Inc

Greetings,

Here we are in the beginnings of a new year. February being the month of *LOVE*, I thought I would discuss connections. No, not the kind between him and her, but connections for communication.

Explore your new world:

The latest version of the Andromat manipulators can be equipped with our newest digital Andromat card. With this equipment, we now have access to all the electrical signals on the manipulator. Any input, output, control, or feedback can now be captured, monitored, and even manipulated.

In addition, the new digital card has onboard communication connection via Profibus or Ethernet. So what are some of the advantages of having the new digital Andromat card?

continued on page 2

INSIDE THIS ISSUE

- 1 Connectivity
- 1 Explore Your World
- 2 Remote Monitoring
- 2 Complete Control
- 2 Troubleshooting
- 2 Multiple Access Locations
- 2 Conclusion

Henschel Andromat Inc

Come To The "A" Team

160 Commercial Court

Alabaster, AL 35007

P- 205.664.2484

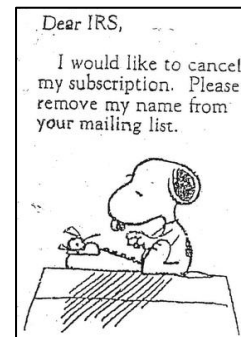
F- 205.664.2481

www.andromatusa.com



Tax Day is 18-APR-16

3 extra days!!!



Andromat Today is a quarterly trade publication for discussing Andromat issues important to the end user. Each issue will contain useful tidbits of information as well as any news updates from the company. Look for your issue of *Andromat Today* in your inbox.

Not getting your issue? Submit your email address to service@andromat.com and we'll ensure you are added to the list.

Do you have a topic for *Andromat Today*? Send us what you would like to see and your name could appear in an upcoming issue. Send your requests to service@andromat.com

Remote Monitoring:

Now that all of the electrical signals are being captured through the Andromat card, we have the ability to remotely monitor the data in real time. With the onboard communication protocols coupled with our proprietary software, anyone has the ability to see the real time data from the Andromat card, PLC, or HMI on a PC within the network. Additionally, using either the built in VPN switch or through company provided access, Andromat personnel can also look at the real time data for troubleshooting.

Complete Control:

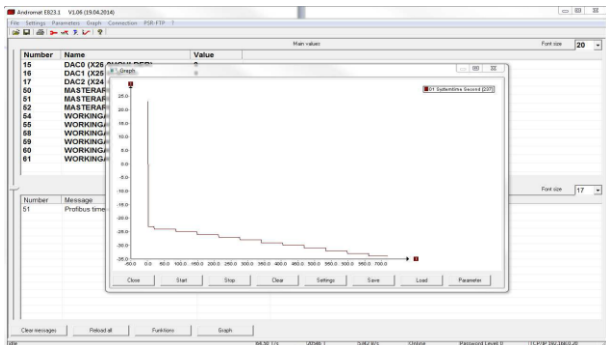
If we can monitor the electrical signals, shouldn't we also be able to tweak them? Yes, yes you can. All of the 200+ set points can be manipulated, though we usually limit ourselves to about 10 or so. Machine speeds, work arm limits, and more can all be adjusted with the digital Andromat card.

Number	Name	Value	Unit	Min	Max	Default	Comment
10	DACC1 (K2)	0.0000	m	0.0000	0.0000	0.0000	
11	DACC2 (K2)	0.0000	m	0.0000	0.0000	0.0000	
12	DACC3 (K2)	0.0000	m	0.0000	0.0000	0.0000	
13	DACC4 (K2)	0.0000	m	0.0000	0.0000	0.0000	
14	DACC5 (K2)	0.0000	m	0.0000	0.0000	0.0000	
15	DACC6 (K2)	0.0000	m	0.0000	0.0000	0.0000	
16	DACC7 (K2)	0.0000	m	0.0000	0.0000	0.0000	
17	DACC8 (K2)	0.0000	m	0.0000	0.0000	0.0000	
18	DACC9 (K2)	0.0000	m	0.0000	0.0000	0.0000	
19	DACC10 (K2)	0.0000	m	0.0000	0.0000	0.0000	
20	DACC11 (K2)	0.0000	m	0.0000	0.0000	0.0000	
21	DACC12 (K2)	0.0000	m	0.0000	0.0000	0.0000	
22	DACC13 (K2)	0.0000	m	0.0000	0.0000	0.0000	
23	DACC14 (K2)	0.0000	m	0.0000	0.0000	0.0000	
24	DACC15 (K2)	0.0000	m	0.0000	0.0000	0.0000	
25	DACC16 (K2)	0.0000	m	0.0000	0.0000	0.0000	
26	DACC17 (K2)	0.0000	m	0.0000	0.0000	0.0000	
27	DACC18 (K2)	0.0000	m	0.0000	0.0000	0.0000	
28	DACC19 (K2)	0.0000	m	0.0000	0.0000	0.0000	
29	DACC20 (K2)	0.0000	m	0.0000	0.0000	0.0000	
30	DACC21 (K2)	0.0000	m	0.0000	0.0000	0.0000	
31	DACC22 (K2)	0.0000	m	0.0000	0.0000	0.0000	
32	DACC23 (K2)	0.0000	m	0.0000	0.0000	0.0000	
33	DACC24 (K2)	0.0000	m	0.0000	0.0000	0.0000	
34	DACC25 (K2)	0.0000	m	0.0000	0.0000	0.0000	
35	DACC26 (K2)	0.0000	m	0.0000	0.0000	0.0000	
36	DACC27 (K2)	0.0000	m	0.0000	0.0000	0.0000	
37	DACC28 (K2)	0.0000	m	0.0000	0.0000	0.0000	
38	DACC29 (K2)	0.0000	m	0.0000	0.0000	0.0000	
39	DACC30 (K2)	0.0000	m	0.0000	0.0000	0.0000	
40	DACC31 (K2)	0.0000	m	0.0000	0.0000	0.0000	
41	DACC32 (K2)	0.0000	m	0.0000	0.0000	0.0000	
42	DACC33 (K2)	0.0000	m	0.0000	0.0000	0.0000	
43	DACC34 (K2)	0.0000	m	0.0000	0.0000	0.0000	
44	DACC35 (K2)	0.0000	m	0.0000	0.0000	0.0000	
45	DACC36 (K2)	0.0000	m	0.0000	0.0000	0.0000	
46	DACC37 (K2)	0.0000	m	0.0000	0.0000	0.0000	
47	DACC38 (K2)	0.0000	m	0.0000	0.0000	0.0000	
48	DACC39 (K2)	0.0000	m	0.0000	0.0000	0.0000	
49	DACC40 (K2)	0.0000	m	0.0000	0.0000	0.0000	
50	DACC41 (K2)	0.0000	m	0.0000	0.0000	0.0000	
51	DACC42 (K2)	0.0000	m	0.0000	0.0000	0.0000	
52	DACC43 (K2)	0.0000	m	0.0000	0.0000	0.0000	
53	DACC44 (K2)	0.0000	m	0.0000	0.0000	0.0000	
54	DACC45 (K2)	0.0000	m	0.0000	0.0000	0.0000	
55	DACC46 (K2)	0.0000	m	0.0000	0.0000	0.0000	
56	DACC47 (K2)	0.0000	m	0.0000	0.0000	0.0000	
57	DACC48 (K2)	0.0000	m	0.0000	0.0000	0.0000	
58	DACC49 (K2)	0.0000	m	0.0000	0.0000	0.0000	
59	DACC50 (K2)	0.0000	m	0.0000	0.0000	0.0000	
60	DACC51 (K2)	0.0000	m	0.0000	0.0000	0.0000	
61	DACC52 (K2)	0.0000	m	0.0000	0.0000	0.0000	

Parameters

Troubleshooting:

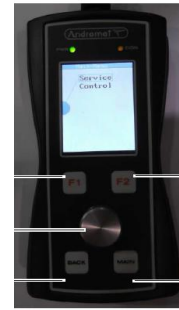
The new digital card makes troubleshooting much easier. Now you can monitor potentiometer signals, transducer values, as well as signals to and from the servo valves. The software used for monitoring the signals also has graphing capabilities. Up to 10 data points can be applied to a customizable graph. Graphs can then be saved, for comparison with a later graph. Time based maintenance decisions can now be made from the data gathered.



Graphing

Multiple Access Location:

Your PC is not the only location for viewing or adjusting parameters. Through controlled access menus, the parameters can be located within the HMI. Our new hand held remote has a built in LCD screen for monitoring and adjusting parameters while still providing independent control of the three axis of movement. The operational set points can then be saved on a PC, server, on board SD card, or the hand held remote.



Hand held remote

Conclusion:

The new digital Andromat card which is available on new Andromat manipulators, propels us into the 21st century. This leads us to one question:

Is your manipulator “connected”?



For more information, please see our website:
<http://www.andromatusa.com/design.php>